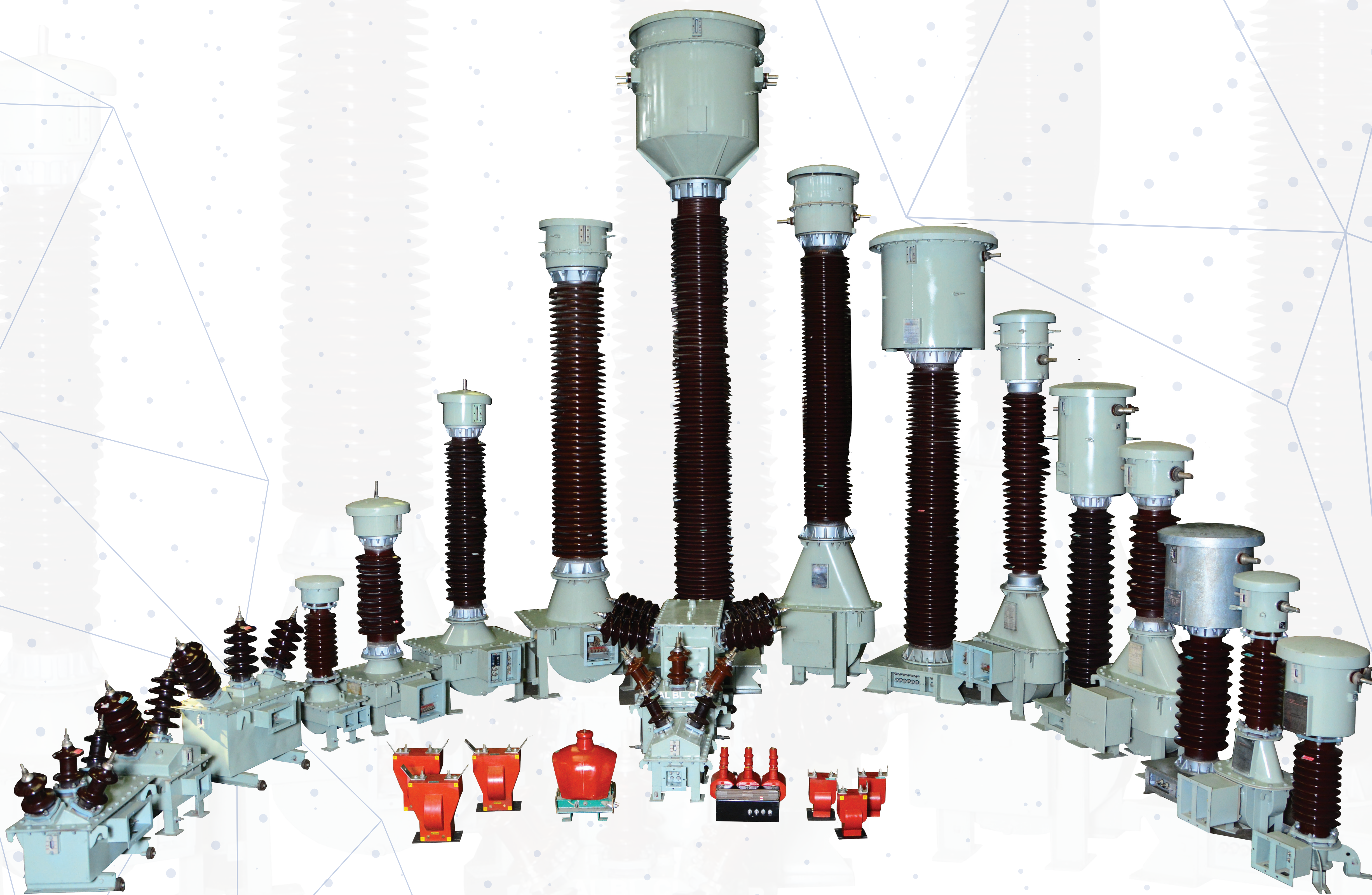


ON THE PATH TO PERFECTION

PRODUCT RANGE

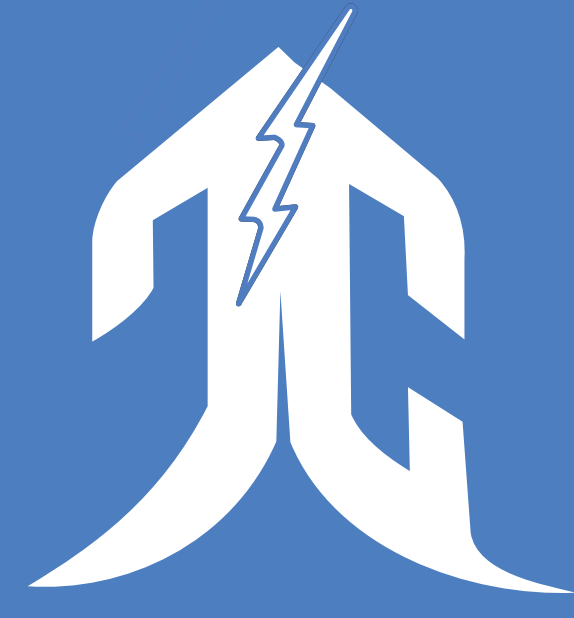
- Outdoor OIP Insulated Current Transformers (CTs) upto **420 kV**
- Outdoor OIP Insulated Inductive Voltage Transformer (IVTs) upto **245 kV**
 - Outdoor OIP Insulated Combined CT-PT Units upto **36 kV**
 - Epoxy Resin Cast Indoor CTs & PTs upto **36 kV**
- Indoor CT-PT Metering Cubicle with Epoxy Resin Cast CTs & PTs upto **36 kV**



CURRENT TRANSFORMERS

SALIENT FEATURES

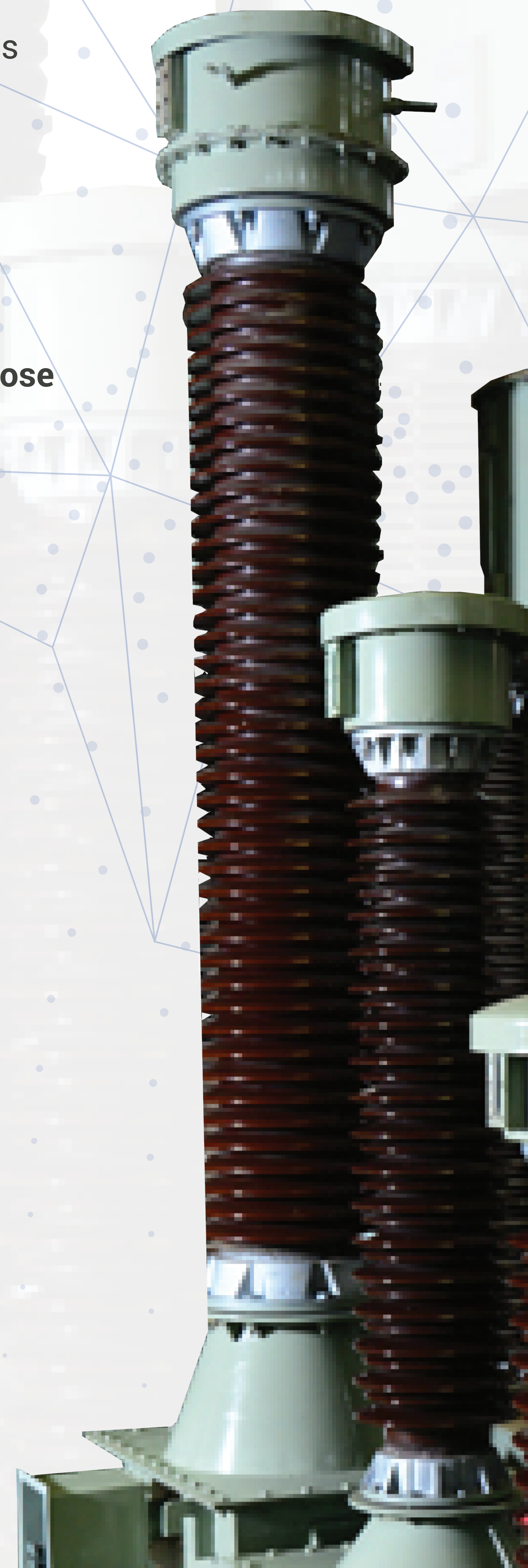
- CTs are manufactured with **Porcelain & Composite (Polymeric) Insulators** as per customer requirements.
- CTs are manufactured with **Bar primary & Wound primary** constructions as per customer requirements.
- Oil Volume Compensation to maintain **Hermetic sealing** of CTs is achieved through SS bellows or Dry N₂ Gas cushion in conformation to customer requirements thus no need of regular maintenance procedure.
- CTs are manufactured with **maximum primary current rating** upto 3200A with STC ratings upto 50kA/1Sec.
- CTs are manufactured with all **accuracy classes as given in IS:2705 / IS:16227 / IEC61869** meeting customer requirements thus freedom to choose number of cores with accuracy class mentioned in relevant IS / IEC.
- All secondary terminal boxes conform to **IP: 55** requirements.
- CTs are manufactured with **MS (Painted/Hot Dip Galvanised) / SS / Aluminium tanks** to meet customer specification & technical requirements.
- CTs manufactured generally have **low partial discharges** and **stable tan delta values** over prolonged period of time.
- CTs are type tested for Seismic test conforming to **high seismic withstand capability**.



VOLTAGE TRANSFORMERS

SALIENT FEATURES

- Voltage Transformers are of **Inductive type**.
- Outdoor RVTs of 11 kV & 33 kV Voltage class manufactured conforming to **IS:3156 / IS:16227 / IEC61869** meeting customer technical specifications.
- VTs are manufactured with **Porcelain & Composite(Polymeric) insulators** as per customer requirements.
- Oil Volume Compensation to Maintain **Hermetic sealing** of VTs is achieved through **SS bellows or dry N₂ Gas cushion** in conformation to customer requirements thus no need of regular maintenance procedure.
- VTs are manufactured with all accuracy classes as given in **IS:3156 / IS:16227 / IEC61869** meeting customer requirements thus **freedom to choose number of windings** with accuracy class mentioned in relevant IS / IEC.
- All secondary terminal boxes **conform to IP. 55 requirements**.
- VTs are manufactured with **MS (Painted/ Hot Dip Galvanised) tanks** to meet customer specification & technical requirements.
- VTs manufactured generally have **low partial discharges** and stable tan delta values over prolonged period of time.
- VTs are type tested for Seismic test conforming to **high seismic withstand capability**.





HEPTACARE
POWER INDUSTRIES PVT. LTD.

INDOOR TYPE CURRENT TRANSFORMERS AND VOLTAGE TRANSFORMERS

SALIENT FEATURES

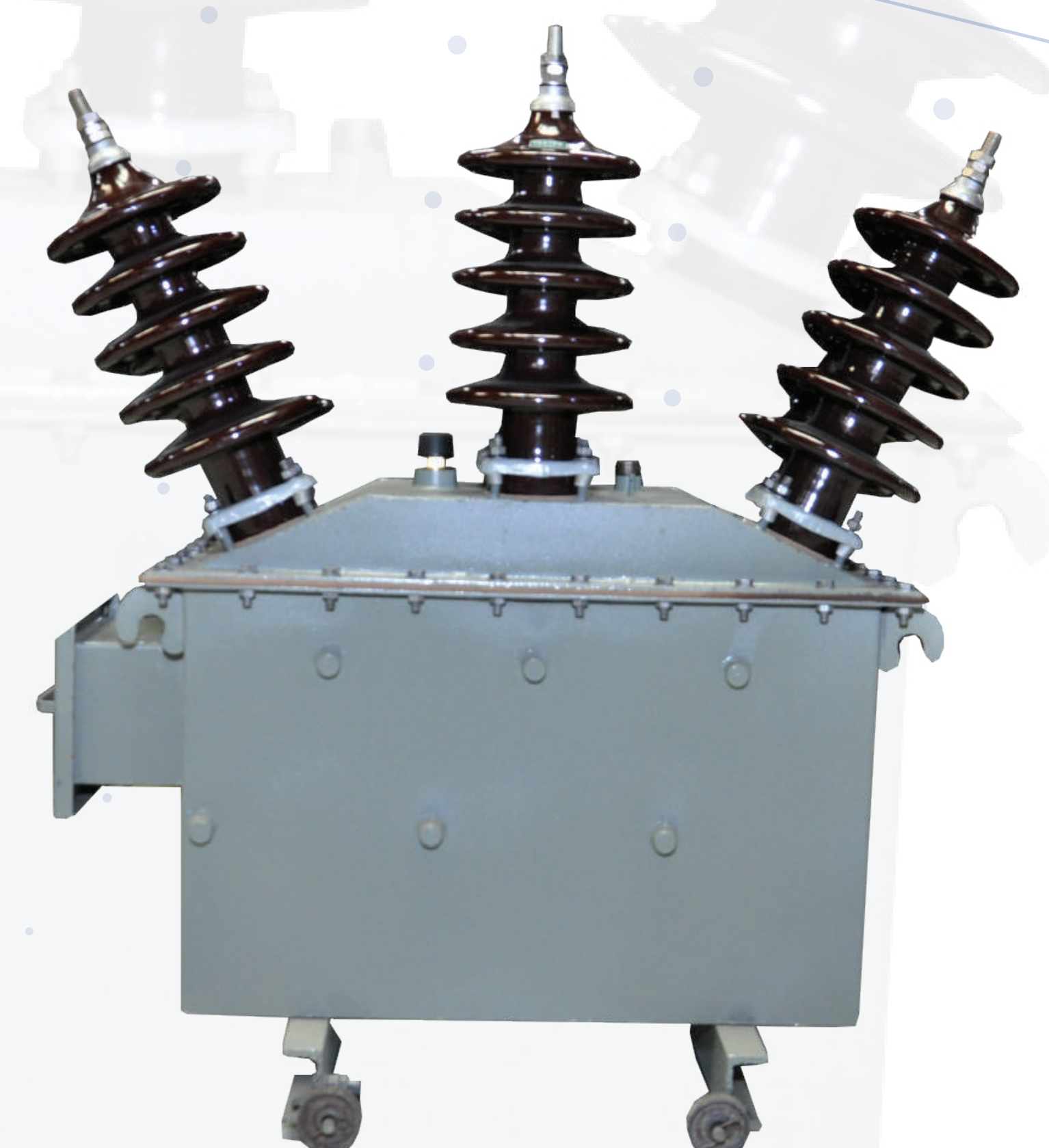
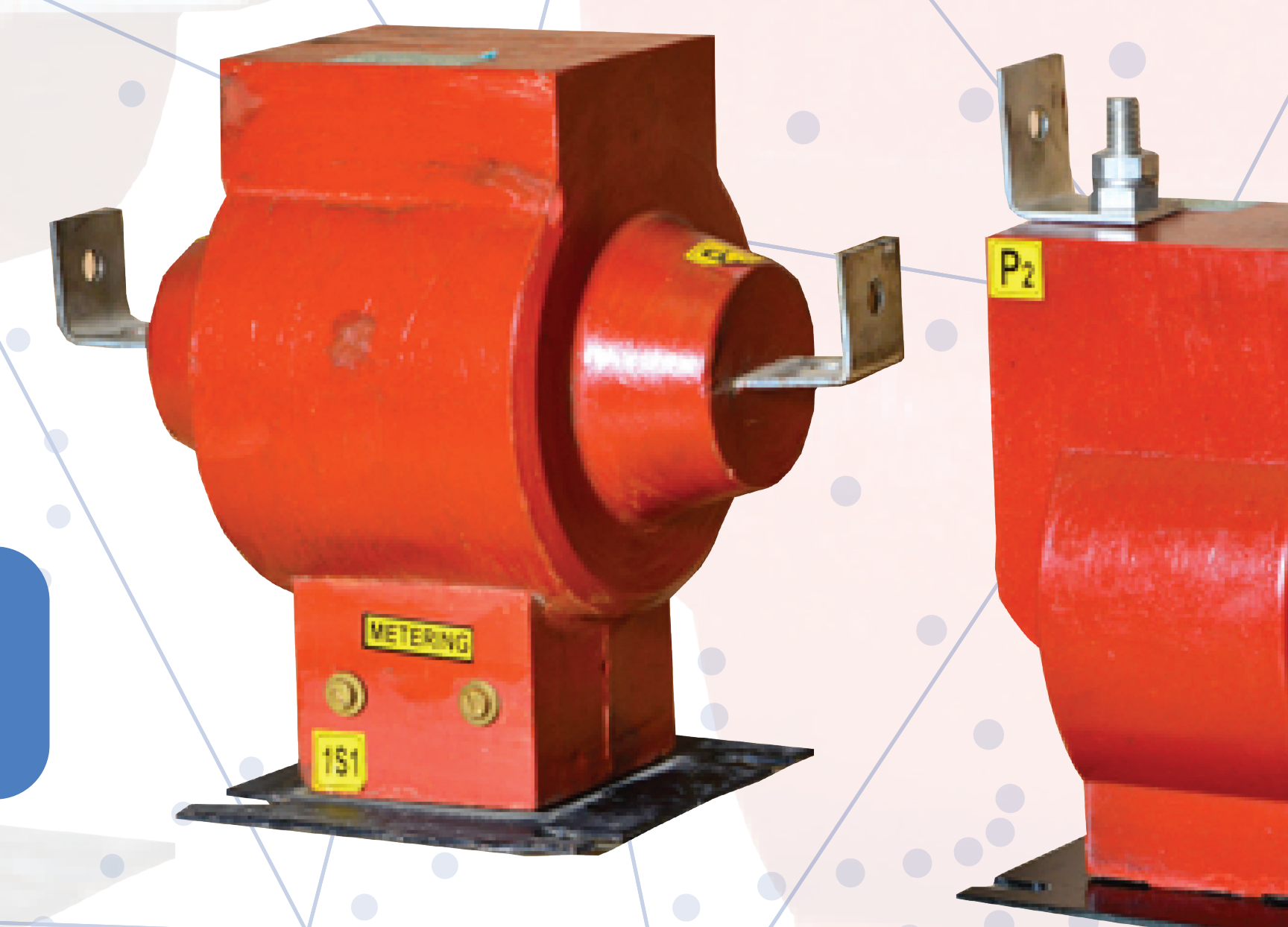
- CTs & IVTs are manufactured conforming to **IS:2705 / IS:3156 / IS:16227 / IEC61869** meeting customer technical specifications having high accuracy with stable values lifelong.
- CTs & IVTs are manufactured with Hot setting epoxy & resin mix of reputed make through **gravity dye casting** under vacuum & **APG process**.
- Dedicated 100kV HV & PD lab operatable from 50Hz to 150Hz for **effective monitoring of PD values** in resin cast transformers.

COMBINED CT-PT UNITS AND METERING CUBICLES

SALIENT FEATURES

- Designed for **3 Phase, 4 wire circuits** including 3 single phase CTs and 3 single phase VTs or one 3 phase VT having **stable accuracy** over the lifetime.
- CT-PT Units & Metering Cubicles have **pilfer proof sealing arrangement** conforming to customer specification.
- Secondary box in CT-PT combined Units is conforming to **IP:55** requirements.

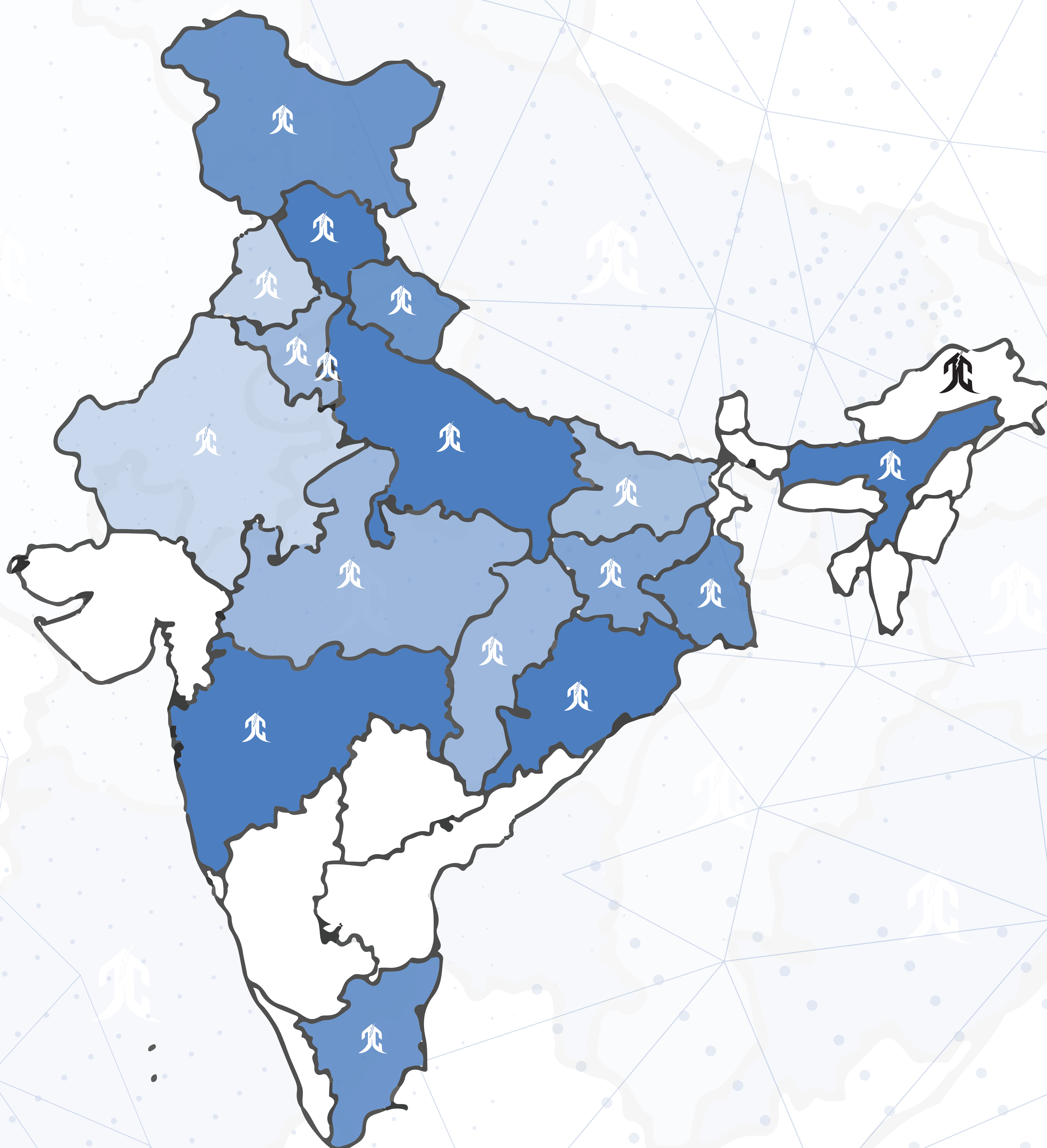
www.heptacare.com





HEPTACARE

POWER INDUSTRIES PVT. LTD.



OUR ESTEEMED CUSTOMERS



Regd. Off. & Unit 1

A-9 and A-10, Udyog Puram
Partapur, Meerut (250103)
0121-2441377/78

Unit 2

41-42, IDEB Industrial Estate,
Mahua Kheda Ganj, Kashipur (244713)
05947-226153